

## StoVentec Panel Facade

StoVentec Glass:

Highlighted joints – for exclusive glass facades

The surface of the ventilated rainscreen cladding system with concealed fixing and exposed joint pattern is available with high-quality glass panels in varying element sizes. The areas of application of this system are very diverse: the StoVentec Panel Facade can be used in the construction of new buildings and in refurbishment, both outside and inside. The optimised stainless-steel-aluminium sub-construction reduces thermal bridges to a minimum.

# StoVentec Glass

Design and functionality at its best

## Liberty regarding colour, shape and texture

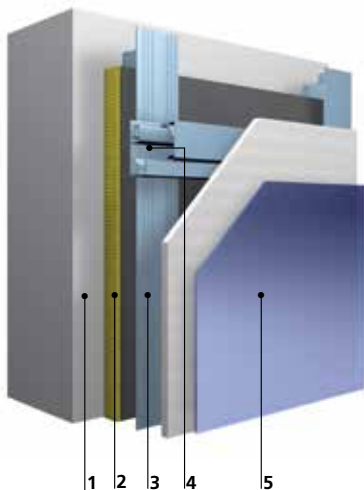
Monochrome or multi-coloured, as rectangle or parallelogram, metal-coated or printed: StoVentec Glass facades prove to be an ideal projection surface for a large variety of ideas. Furthermore, the combination of glass and natural stone or photovoltaics set architectural highlights.

## Glass overhead

The system looks good both on the facade and inside of a building and since StoVentec Glass has also been technically approved for ceiling liners, nothing can get in the way of overhead glazing.



**Hamburg State Opera, Hamburg, Germany**  
**Architect: Kleffel Könnholdt und Partner Architekten, Hamburg, Germany**



**StoVentec Glass system build-up**

- 1 Anchorage substrate
- 2 Thermal insulation (fleece-laminated)
- 3 Sub-construction
- 4 Agraffe profile
- 5 StoVentec Glass

## Overview of StoVentec Glass

### Areas of application:

- Existing and new buildings. Installation limits according to national building regulations
- Wall structures: masonry (concrete, lime sandstone, brick, porous concrete), concrete slab construction (three-layer concrete slab) and fair-faced masonry
- Levels unevenness by means of a flexible sub-construction

### Properties:

- Lowest thermal bridge coefficients due to own sub-construction made from a combination of stainless steel and aluminium
- Improvement of up to 10 dB (A) in the airborne sound insulation index
- Highly effective thermal insulant
- Highly weather-resistant
- Limited combustibility

### Appearance:

- Surface made of tempered safety glass
- Concealed fixing
- Resistant, smooth surface – low maintenance costs regarding cleaning
- High-quality appearance
- Brilliant surfaces with depth effect
- Broad colour variety – RAL colours, screen printing, logos etc.
- Panel facade – joint as design element
- No limitation to the lightness value

### Application:

- Fitting of factory-produced panels in the sub-construction at the construction site
- Installation possible in all weathers
- Fast installation
- Complete detail solutions

### Approvals:

The relevant European and/or national approvals apply.

## Head office

Sto SE & Co. KGaA

## Market Development

Ehrenbachstrasse 1  
79780 Stuehlingen  
Germany

Phone +49 7744 57-1131

Fax +49 7744 57-2428

infoservice@sto.com

www.sto.com



The detailed technical specifications and information on the products contained in the Technical Data Sheets and approvals must be observed.